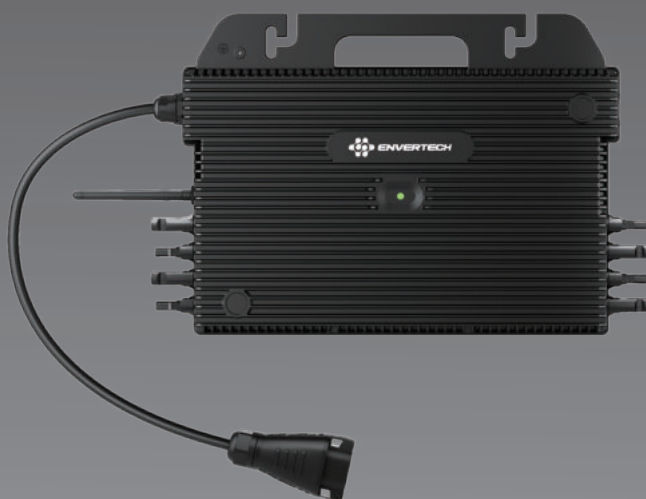


EVT2500

Connected to four panels



SAFE

Low DC voltage.



QUALITY

Components selected from world-class brands.



MONITORING

Built-in WiFi or additional monitoring device* available.



FLEXIBILITY

Adapts to any system size and optimizes space.



PLUG & PLAY

Hand-in-hand design, fewer add-ons, and fast installation.



15 YEARS

Long 25 years lifetime; optional up to 20 years warranty.



MODULE-LEVEL

Module-level optimization & monitoring.

Monitoring device*: Monitoring devices are optional at extra cost.



Monitoring

Enables users to manager the systems in a smart digital ways via PLCC or Built-in Wifi.



ENVERTECH

www.envertec.com

DATASHEET

Model	EVT2500
Input Data (DC)	
Recommended Module Power Range(STC)	(250W-750W+)*4
Max. DC Input (V)	60V
Max. Input Short-circuit Current (A)	25A
Operating Range (V)	16V-60V
Max. Input Continuous Current (A)	20A*4
MPPT Voltage Range (V)	22V-50V
Output Data (AC)	
Normal Voltage (V)	220V-230V
Voltage Range (Vac)	189V-260V
Current (Max.Continuous) (A)	11.36A
Frequency (Hz)	50Hz/60Hz
Frequency Range (Hz)	47.5-52.5Hz / 57.5-62.5Hz
Power (Max.Continuous) (W)	2500W
Power Factor Range	+/-0.90
Total Harmonic Distortion	<3%
Maximum Units Per Branch	2 Units (12AWG Cable)
Efficiency	
Peak Efficiency	96.5%
MPPT Efficiency	99.9%
Nighttime Power Consumption	< 100mW
Features	
Communication	PLCC (Power Line Carrier Communication) / WiFi
Compliance	LVD 2014/35/EU, EMC 2014/30/EU, INMETRO, BIS, CQC
Warranty	15 Years (20 year optional)
Others	
Ingress Protection (IP)	IP 67
Protective Class	Class I
Temperature (°C)	-40°C to +65°C
Relative Humidity	0% - 98%
Overvoltage Category	OVC III (AC Main), OVC II (PV)
Inverter Isolation	<input type="checkbox"/> Non-isolated <input checked="" type="checkbox"/> High Frequency Isolated
Weight	6.5kg
Dimensions (W*H*D)	395mm*242.4mm*47mm